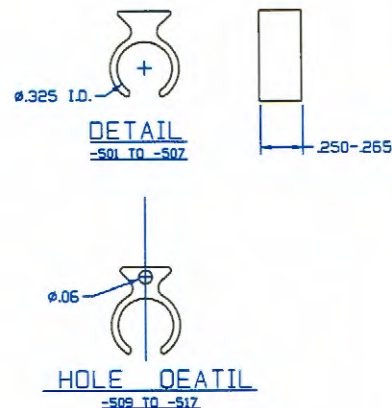
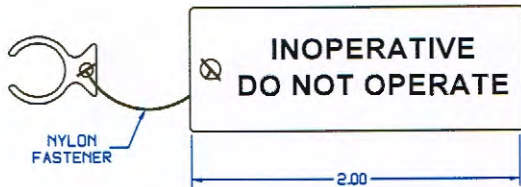




DASH NO.	COLOR	WITH HOLE
<b>CIRCUIT BREAKER RING ONLY</b>		
-1	NATURAL	NO
-501	RED	NO
-503	YELLOW	NO
-505	BLUE	NO
-507	BLACK	NO
<b>CIRCUIT BREAKER RING W/ HOLE ONLY</b>		
-509	NATURAL	YES
-511	RED	YES
-513	YELLOW	YES
-515	BLUE	YES
-517	BLACK	YES
<b>CIRCUIT BREAKER RING &amp; TAG REMOVE BEFORE FLIGHT</b>		
-519	NATURAL	YES
-521	RED	YES
-523	YELLOW	YES
-525	BLUE	YES
-527	BLACK	YES
<b>CIRCUIT BREAKER RING &amp; TAG INOPERATIVE DO NOT OPERATE</b>		
-529	NATURAL	YES
-531	RED	YES
-533	YELLOW	YES
-535	BLUE	YES
-537	BLACK	YES



**REMOVE BEFORE FLIGHT**



**NOTES:** UNLESS OTHERWISE SPECIFIED

1. THIS INOPERATIVE RING IS CAPABLE OF BEING INSTALLED AND REMOVED FREE-HANDED.
2. REMOVAL OF THE INOPERATIVE RING WILL NOT DAMAGE THE CIRCUIT BREAKER AND ELIMINATES DAMAGE TO THE CIRCUITBREAKER PANEL.
3. TAG COLOR TO BE "RED ONLY" FED STD 595 #310302.
4. INFORMATION ON TAG IS HOT STAMPED WHITE ON ONE SIDE ONLY.
5. MATERIAL: NYLON 6/6 LP-41D.
6. PACO PLASTICS HAS "FMA-PMA" APPROVAL/ FAA-APPROVED STANDARD "MAINTENANCE SUPPORT HARDWARE"
7. PART NUMBER IS THE SAME AS S-4933959



8540 Dice Road Santa Fe Springs, CA 90670 USA  
 Phone (562) 698-0916 www.pacoplastics.com

**PACO PROPRIETARY PART**  
**DO NOT DUPLICATE. CATALOG SHEET**

For inquiries: g.dowden@pacoplastics.com

**RING- INOPERTAIVE CIRCUIT BREAKER**

**S4933959**